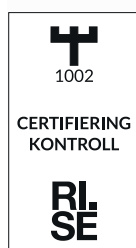
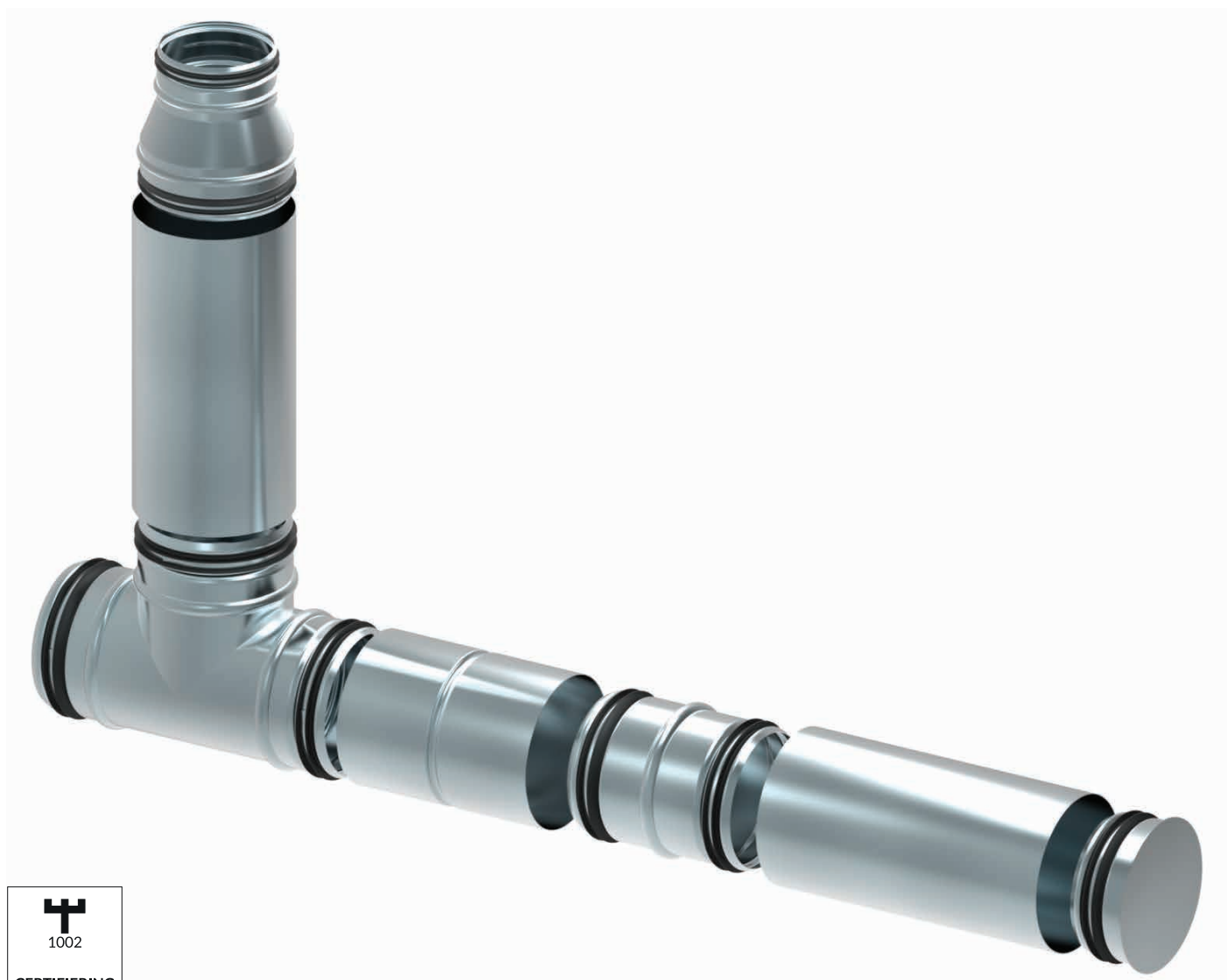


VENTILATION SYSTEM

100 & 125 mm



C 900734

INSTRUCTIONS

AREAS OF USE

Biltema's Ventilation Piping is a complete helical duct system made from hot-dip galvanised sheet metal. Type-approved in airtightness class D in accordance with EN 12237. All parts are fitted with a sealing ring in EPDM rubber.

Type approval C900734

STORAGE

Store ducts and components in a well-organised and weather-protected storage area to minimise the risk of damage.

Do not use ducts or components that have been damaged in such a way that they compromise the tightness or strength of the system.

PRODUCT PROPERTIES

- Quick and easy to fit.
- Factory-fitted rubber seals without loose parts ensure tight connection.
- No leakage risk when correctly installed.
- Possible to install in all weather conditions.

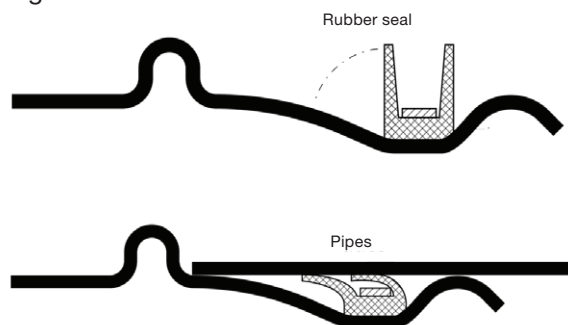
Material and surface finish

The piping and piping components are made of hot-dip galvanised sheet metal with designation DX51D in accordance with SS-EN 10346:2015 and with a zinc thickness of 275 g/m² (double-sided). This sheet metal is suitable for use in corrosive class C3 environments in accordance with AMA VVS & Kyla 2022 and SS-EN ISO 12944-2:2017.

Rubber seals

Seals made from homogeneous EPDM rubber are mounted along the connector's exterior, which ensures that the seal always remains in position regardless of the installation conditions.

EPDM rubber is of high quality and is resistant to ozone, UV radiation, and temperature changes, which contributes to a long service life.



ASSEMBLY INSTRUCTIONS

Preparations

- Clean the piping.
- Cut the piping carefully at a straight angle. File the edges.
- Check that the piping and seals are intact.

Connection

1. Insert the connector into the piping as far as it will go. By twisting the components carefully it will be easier to get it into position.
2. Secure the connection with sheet metal screws (minimum dimension Ø3.2 x L9.5 mm) at an even distance around the joint. Use 2 screws for a 100 mm pipe diameter and 3 for a 125 mm diameter. The screws must be fitted 10±3 mm from the pipe edge to prevent the screws from damaging the rubber gasket.



NOTE!

- When suspending the piping, the maximum oscillation distance must be 3 m for non-insulated ducting and maximum 2 m for insulated ducting. Maximum distance to joint: 0.5 m.
- Unused screw holes must be sealed with sealant approved for ventilation piping.
- Use safety gloves. The ventilation ducting sometimes has sharp edges. Be particularly careful when handling cut edges of helical ducting and the straight edges on the sheet metal mounting parts.

